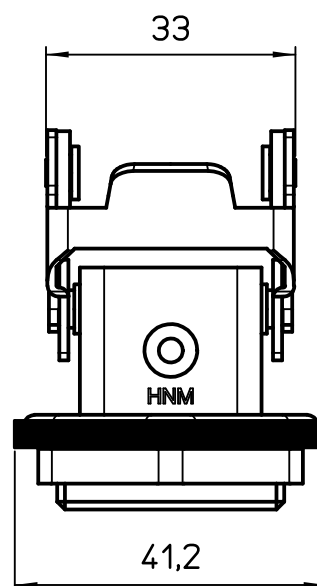
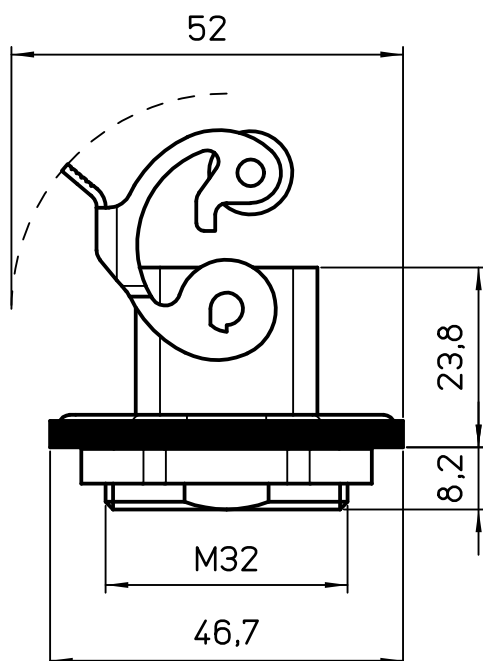
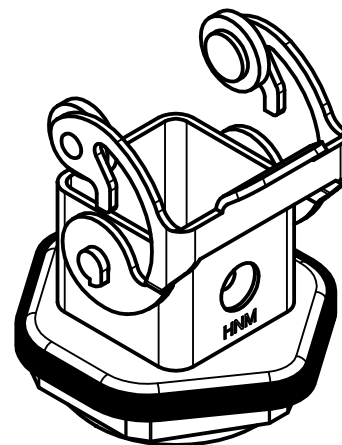
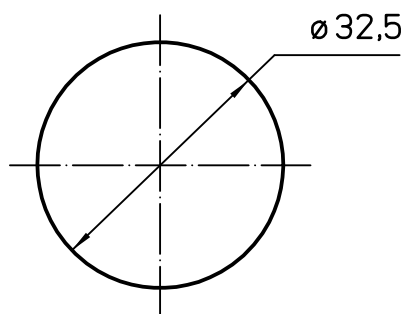


Panel cut-out for enclosures



SW Counternut=35mm

Diritti riservati All rights reserved

REV.	DATE	SIGNATURE



Dimensions
in mm

Simplified representation with dimensions without tolerance

Original Size A4

Date 02/02/22

Sign. S. Diasparra

RKAX IFC

Bulkhead mounting housing with flange gasket, stainless steel lever, M32, HNM

Scale

1:1

